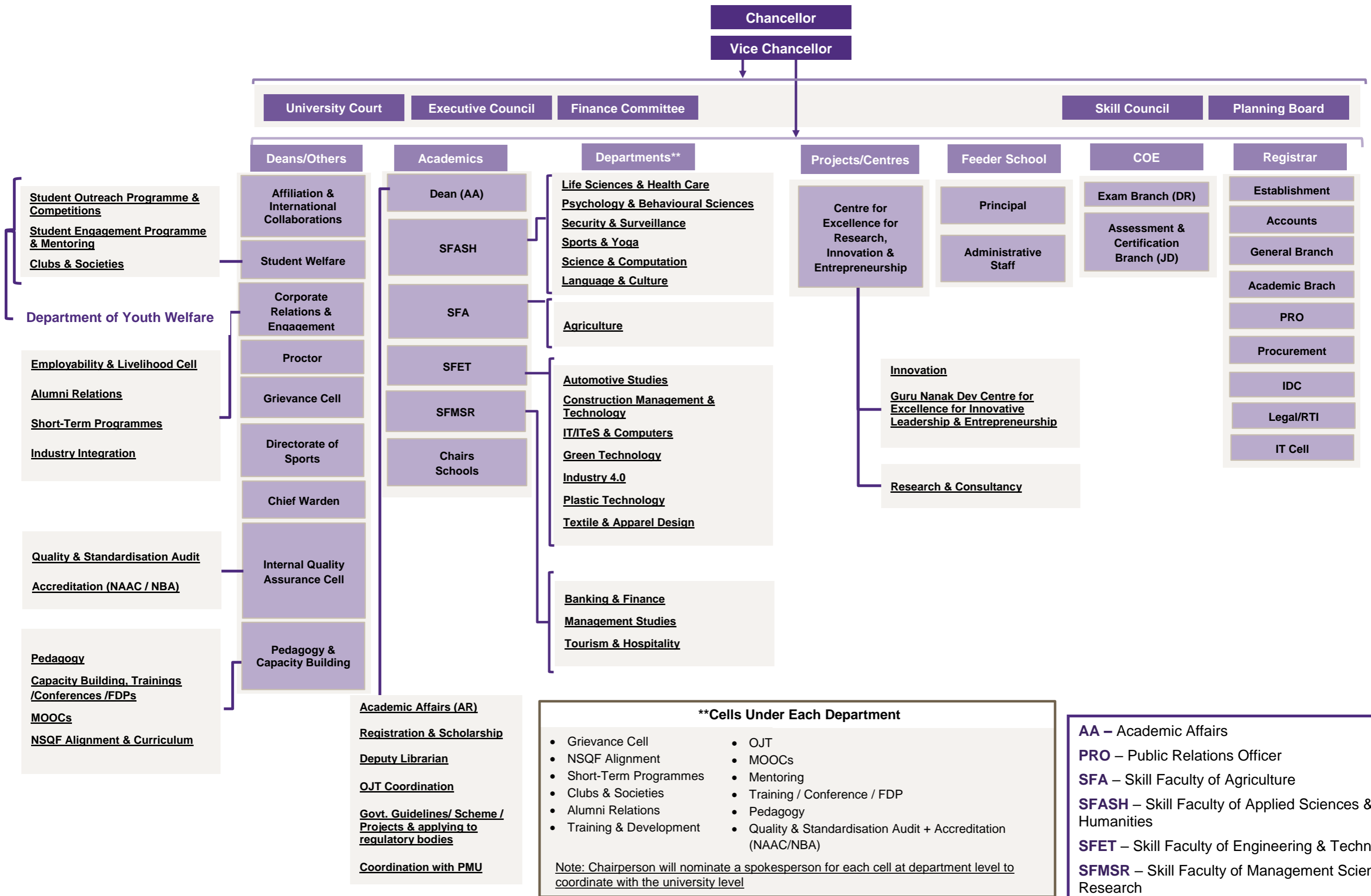


# Functional Structure of SVSU



**\*\*Cells Under Each Department**

- Grievance Cell
- NSQF Alignment
- Short-Term Programmes
- Clubs & Societies
- Alumni Relations
- Training & Development
- OJT
- MOOCs
- Mentoring
- Training / Conference / FDP
- Pedagogy
- Quality & Standardisation Audit + Accreditation (NAAC/NBA)

Note: Chairperson will nominate a spokesperson for each cell at department level to coordinate with the university level

**AA** – Academic Affairs  
**PRO** – Public Relations Officer  
**SFA** – Skill Faculty of Agriculture  
**SFASH** – Skill Faculty of Applied Sciences & Humanities  
**SFET** – Skill Faculty of Engineering & Technology  
**SFMSR** – Skill Faculty of Management Science & Research